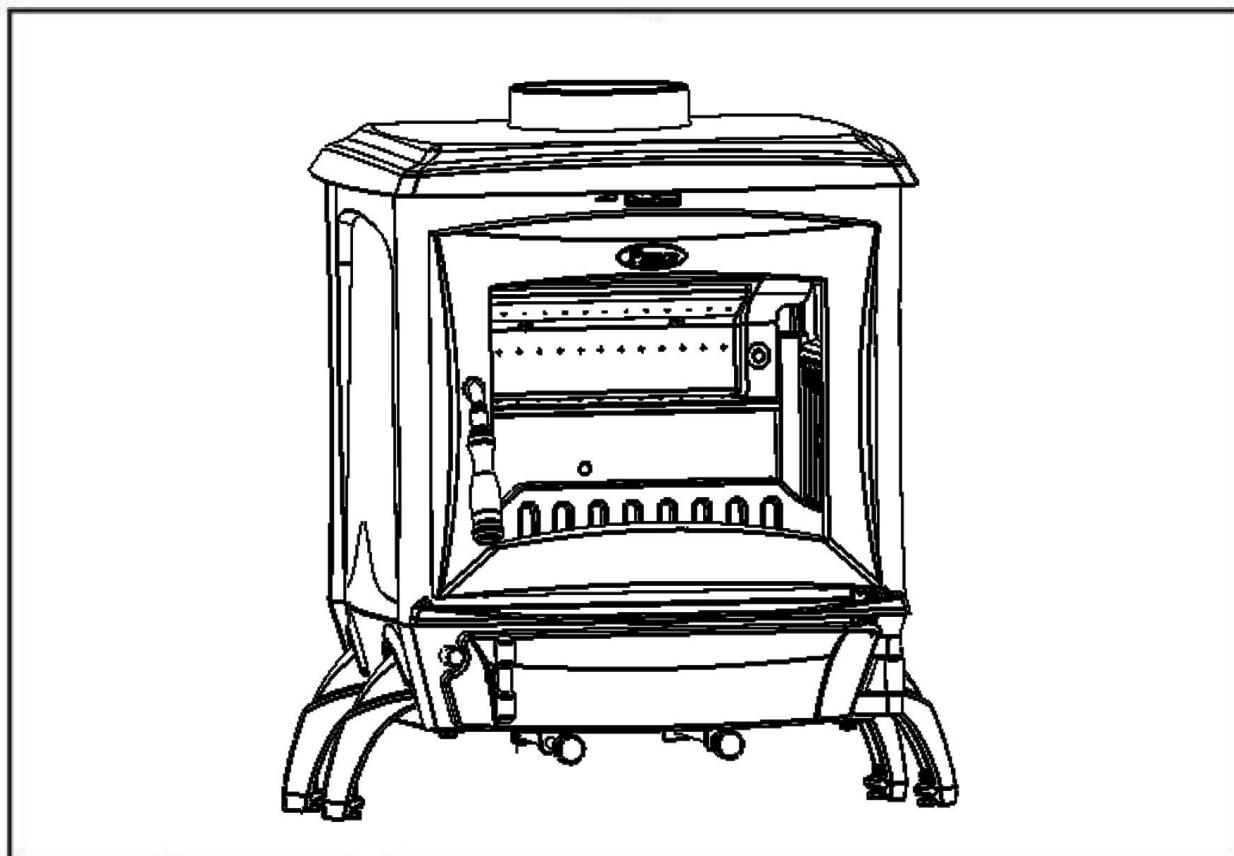


# ***P**IERCE*



## **GLAS 12**

**INSTALLATION & OPERATING INSTRUCTIONS**

## Table of content

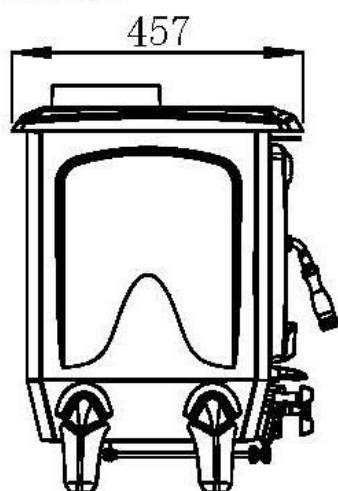
### Page no:

1. Technical data.....	1/2
2. General Information .....	3/6
3. Operating Instructions .....	7/8
4. Exploded View/ Parts Listing .....	9

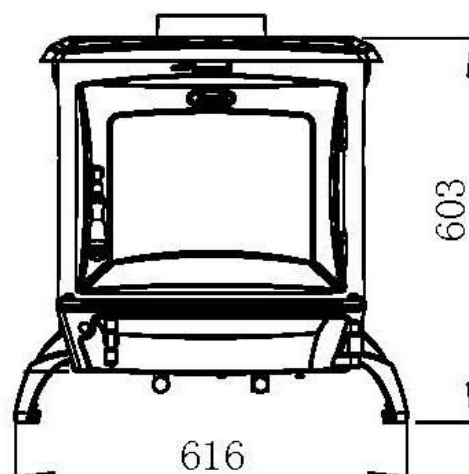
### TECHNICAL DATA:

## SPECIFICATION

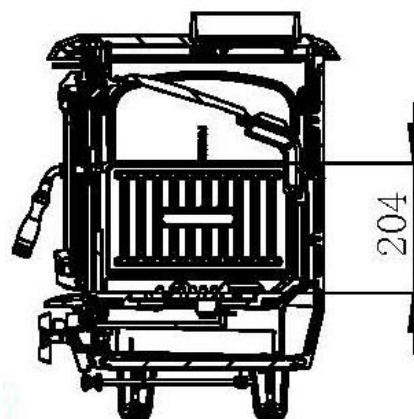
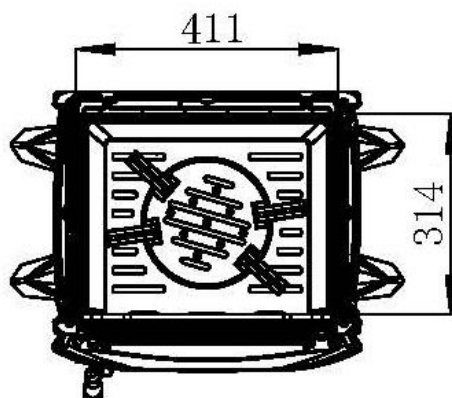
Left View



Front View



Section Dimensions:



## Installation Introduction with Technical Data

Installation of a Pierce Stove must be according to local codes and regulations in each country. Installers must observe all local regulations, including those which refer to national and European standards when installing the product.

All Pierce Stoves are accompanied by Both an installation manual with technical data and a manual on general use and maintenance. Only after a qualified inspector inspects an installation, it can be used. All Pierce Stoves have a name plate of heat-resistant material affixed. Information about identification and documentation for the product is contained on this.

### Technical data:

2. Material: Cast iron

3. Finish: High-temp. Resistance paint

4. Fuel: Multi-fuel

5. Log length, max.: 35 cm

6. Flue outlet: Top/Rear

7. Flue pipe dimension: Inside 150 mm/175 cm<sup>2</sup> cross section

8. Approx. weight: 138 kgs

TECHNICAL DATA		Wood Logs	Ancit
Total Efficiency	%	75.3	71.8
Nominal heat output	kW	11.9	12.4
Mean CO emission (at 13 % O <sub>2</sub> )	%	0.41	0.17
Mean flue gas temperature	°C	358	415
Flue gas mass flow	g/s	8.0	9.4
Refuelling Interval	H	1	1

Technical data according to EN 13240

Recommended chimney draught: 12 Pa

Operational mode: Intermittent

Intermittent combustion in this context means normal use of the fireplace, i.e. fuel is added as soon as the fuel has burnt down.

## **GENERAL INFORMATION:**

Before installation of your Pierce Stove these instructions should be read carefully to fully understand the controls of your new stove. Keep these instructions for future reference.

Due care should be taken when unpacking and installing a Pierce Stove as not to cause damage to your new stove or its surroundings. Check all components are present and functioning before installation occurs.

## **INSTALLATION REQUIREMENTS**

Installation must always be completed in accordance with current building regulations by a competent qualified person. Incorrectly installed stoves can cause serious accidents such as chimney fires or damage to insulation materials in partition walls and or roofs and ceilings. The installation of the stove to current building regulations is the sole responsibility of the home owner.

## **CHIMNEY REQUIRMENTS**

Do not install a Pierce Stove into a chimney that serves any other heating appliance. The chimney height must be a minimum of 4.5 meters vertically from the floor on which the stove is installed to the top of the flue terminal in order for the stove to perform satisfactorily. The chimney should not have an excessive cross sectional area and should be in good condition without any cracks or blockages. The advice of an expert should be sought in relation to having the chimney lined, if deemed necessary by an expert a suitable lining for a solid fuel stove must be used. The internal diameter of any chimney or flue liner used must not be less than 125mm. Any flue liner and or adaptors used must be fitted strictly to the manufacturer's installation instructions. The flue should be checked and swept before connection to the stove. There may be a need to fit a draught stabilizer if an excessive draft exists, advice should be sought from an expert on the draft conditions. The chimney should be swept twice per year, any flue liner used should be cleaned in accordance with manufacturer's instructions.

## **AIR SUPPLY / VENTILATION**

When installing a stove it is recommended that a permanent air vent be fitted if not already in position. The vent should have an effective area of 550mm<sup>2</sup> per kW of rated output above 5kW. In some instillation conditions under 5kW output stoves will have sufficient air for combustion from natural draughts from doors and windows. In newer properties designed to be almost airtight it may be necessary to have a vent fitted for a stove under 5kW rated output. It is recommended to seek expert advice on the air supply/ventilation for your installation to achieve the best performance from your Pierce Stove. If an air vent is fitted it must not be obstructed for any reason when the stove is in use. An extractor fan should not be fitted in the same room as your stove as fumes may emit into the room. It is recommended to fit a Carbon Monoxide alarm for your safety where you have a stove Installed; this is not mandatory in the republic of Ireland at present but is mandatory in the UK.

## **EXTERNAL SURFACE CLEANING**

Cleaning on the matt finish stove is recommended with a brush attachment on a vacuum cleaner.

Cleaning on an Enamel finish stove is recommended with mild soapy water and a soft cloth.

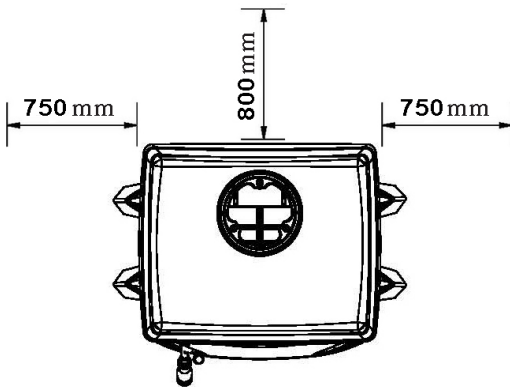
Strong abrasive utensils or strong detergents should never be used, always clean the stove after cooling.

### **DISTANCE TO COMBUSTIBLES**

Pierce stoves operate at high temperatures and for safe operation of your Pierce Stove there are minimum distances to combustible materials, including wood and Plaster board, that must be adhered to at all times. These distances are as follows (see below diagram also)

750mm to either side of the stove

800mm to the back of the stove



The stove should also be installed on a solid non combustible base.

### **GLASS CLEANING**

When there is sufficient heat generated from the fire the air wash system should keep the glass clean. Over time the glass may require cleaning, it is recommended to clean with a liquid detergent and soft cloth taking care not to scratch the glass.

### **ON COMPLETION OF INSTALLATION**

Allow enough time for any fire cement and or mortar used in the installation to dry out according to the manufactures instructions.

A small fire may then be lit to check the installation of the stove.

**Wait at least 24 hours before running the stove at full output.**

### **Please note;**

**When this stove is properly installed it will not emit any fumes into the room. On occasion when using the riddling grate or refueling the stove a small amount of fumes might escape into the room. Constant fume emission is dangerous. If there is persistent fume emission into the room open the windows and doors and let the fire go out. Check the chimney/flue for any blockages and have them cleaned if necessary. Do not relight the stove until the cause of the fume emission has been ascertained and corrected, get expert advice if necessary.**

## **CHIMNEY FIRE**

It is unlikely you will ever experience a chimney fire if your stove is installed and operated correctly as per the operation instructions. In the unlikely event of a chimney fire close the primary air and secondary air controls immediately, evacuate the building and call the Fire Service. Do not re-enter the building until you have been advised by the Fire service that it is safe to do so. Ensure the stove is not used again until the chimney has been swept and the stove, chimney and flue have been inspected by a qualified competent person.

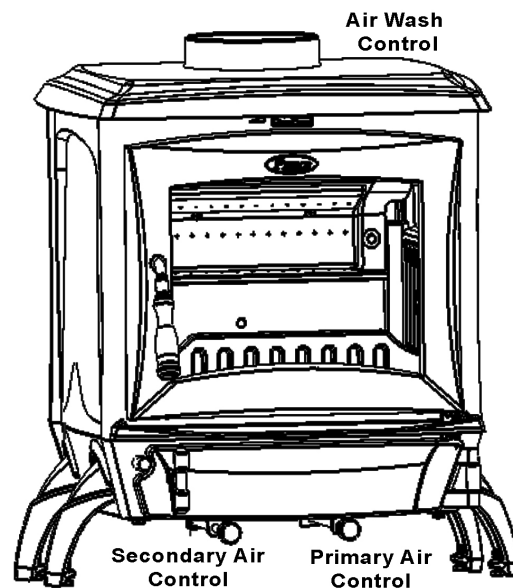
## **IMPORTANT INFORMATION**

- 1. This appliance should not be used as an Incinerator.**
- 2. Non recommended fuels, including liquid fuels should not be used.**
- 3. This appliance, especially surfaces, will be hot to touch when in operation and due care should be taken. It is recommended to use an appropriate fire guard when children the aged or infirm are present.**
- 4. No unauthorized modifications should be made to this appliance.**
- 5. Only recommended replacement parts from the manufacturer should be used for this appliance.**

## FAULT FINDING INSTRUCTIONS

Problem	Probable causes	-Action
<b>Fire difficult to start</b>          <b>Fire goes out</b>	<b>Wood green, too damp or poor quality.</b>  <b>Logs are too big.</b>   <b>Air starvation.</b>  <b>Insufficient draught.</b>	<ul style="list-style-type: none"> <li>– Use the recommended fuel.</li> <li>– To light the fire, use small, very dry kindling To maintain the fire, use split logs.</li> <li>– Open primary air and secondary air</li> <li>– Check that the flue is not obstructed, sweep it if necessary</li> </ul> <b>Seek specialist advice.</b>
<i><b>Fire burns too quickly.</b></i>	<b>Too much draught.</b>  <b>Excessive draw.</b>  <b>Poor quality wood.</b>	<ul style="list-style-type: none"> <li>– Ensure that the primary air is closed. Partially close secondary air.</li> <li>– Install a draught stabiliser.</li> <li>– Do not continuously burn small wood or carpentry offcuts.</li> </ul>
<i><b>Smokes while burning.</b></i>	<b>Insufficient draught</b>  <b>Down draught.</b>  <b>Inadequate ventilation</b>	<ul style="list-style-type: none"> <li>– Check that the flue is not obstructed, sweep if necessary.</li> <li>– Install an anti-down draught cowl.</li> <li>– Insure there is adequate ventilation from outside.</li> </ul>
<i><b>Low heat output.</b></i>	<b>Incorrect Fuels.</b>	<ul style="list-style-type: none"> <li>– Use the recommended fuel.</li> </ul>

## OPERATING INSTRUCTIONS:



### PRIMARY AIR CONTROL

The primary air control knob is positioned to the right hand side at the front of the stove underneath the ashpan door (see above diagram). When the control is pushed fully in it is in the fully closed position and when it is pulled fully out it is in the fully open position. When the stove is in use this control can get hot and it is advised to use the glove provided with your stove when adjusting. Primary air is normally used more when burning mineral fuels such as coal.

### SECONDARY AIR CONTROL

The secondary air control is positioned to the left hand side at the front of the stove underneath the ashpan door (see diagram above). This controls the intake of secondary air into your stove, pull the control out for the maximum amount of air and in for the minimum amount of air. Over time you will find the best setting for your installation and type of fuel used. When the stove is in use this control can get hot and it is advised to use the glove provided with your stove when adjusting. Secondary air is normally used more when burning wood logs.

### AIR WASH CONTROL

The air wash control is positioned above the main door just under the top casting (see diagram above). Slide the control right for the maximum amount of air and left for the minimum amount of air. Over time you will find the best setting for your installation and type of fuel used. When the stove is in use this control can get hot and it is advised to use the glove provided with your stove when adjusting.

### RE-FUELLING/RIDDLING CONTROL

The riddling control is positioned to the front left side of the stove just above the handle for the ashpan door (see diagram above). Before refueling the stove riddle the fire by pulling the control in and out to release all the dead ash to the ashpan compartment below. When adding more fuel do not over fill the fire box as this can cause damage by over firing the stove, the fuel should not be filled higher than the front fire fence. After fueling close the door and adjust the primary air control to the required setting.



**Never let the ash pan become over full as this will cause damage to the grate. Be sure to empty the ashpan before lighting the stove. Ensure the ash has cooled completely before removing the ashpan and disposing of the ash.**

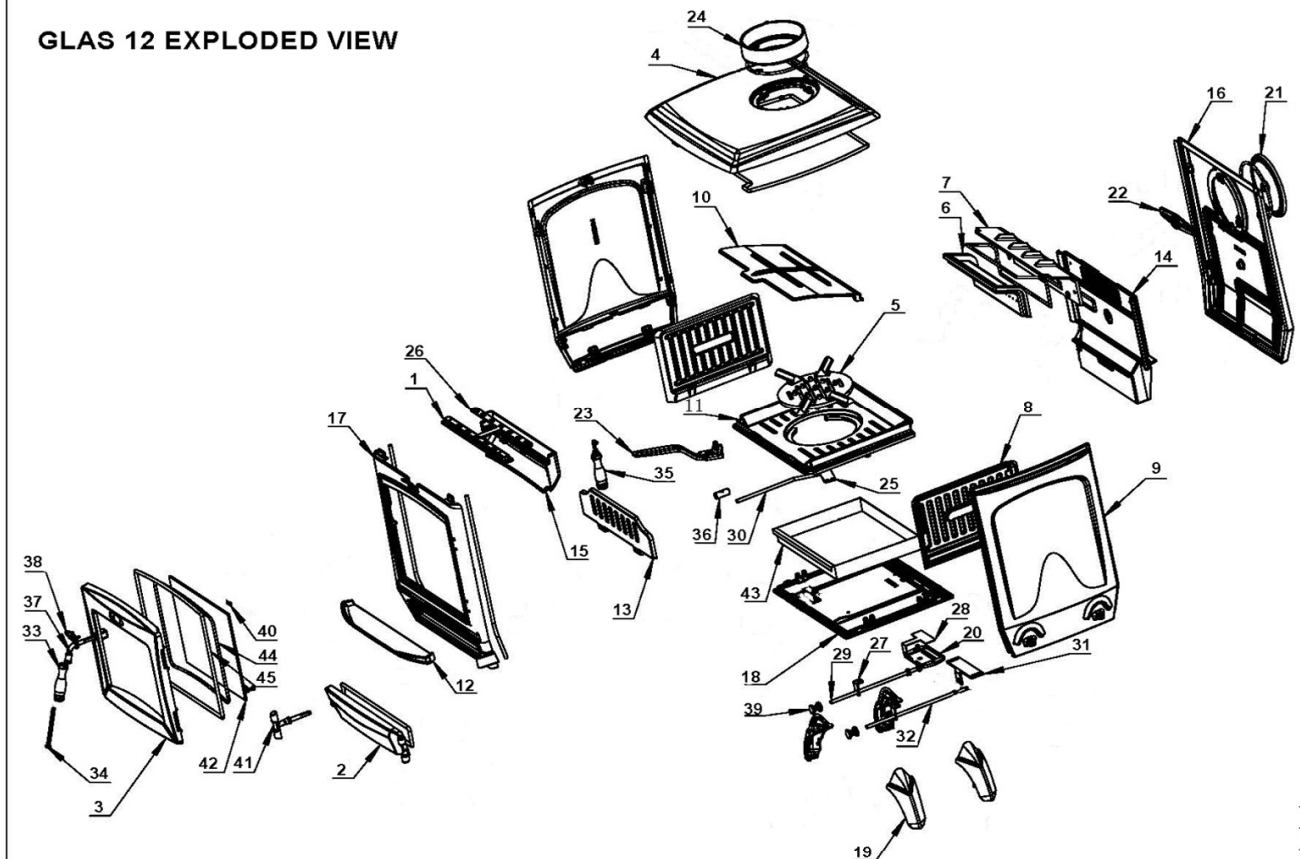
### **LIGHTING THE STOVE**

First make sure the inside of the stove has been adequately cleaned and that all dead ash has been removed also ensure the ashpan has been emptied and the ashpan compartment is clear of any dead ash. Open the primary air to its maximum setting. Place some firelighters or papers on the centre of the grate and light, add some kindling as required, as the fire establishes itself add your selected fuel and close the door. Adjust the primary air setting as required.

### **FUELS**

The stove has been tested using smokeless fuel (Ancit) and wood logs. Other fuels are available and may give similar results. Wood logs up to 30cm long can be used. All fuels should be kept as dry as possible before Use.

## GLAS 12 EXPLODED VIEW



1	Air Wash Shutter	T120856	1	24	Spigot	150	1
2	Ashpan Door	PS10308	1	25	Blanking Plate	CA1102-B	120
3	Fire door	PS10307	1	26	Air Wash Shutter	CA1113-PS203	318X18X4
4	Hop	PS10302	1	27	Pull Rod Bracket	CA1103	/
5	Moving Grate	SM08615	1	28	Baracket	CA0901	75+75
6	Lower Baffle	SM0317	1	29	Pull Rod(A)	CA130109	255x8
7	Middle Baffle	SM0316	1	30	Riddling Rod	CA1404-PS103	171X80X4
8	L & R Baffle	PS2031213	2	31	Air Wash Shutter(down)	CA1114-PS102	139X35X4
9	L&R Plate	PS1030506	2	32	Pull Rod(A)	CA130106	300x8
10	Top Baffle	PS20318	1	33	Door Handle	CA0102-ZH	/
11	Grate Frame	PS20314	1	34	M8 Bolt	CA0266	M8 X 105
12	Ash Baffle	PS10362	1	35	Riddling Rod tool	CA0137	Ø6X23X140
13	Fire Fence	PS10320	1	36	Handle	CA0114-083	Ø12 X 30
14	Back Baffle	PS10311	1	37	Door Handle Axle	CA0101-ZH	60 Ø10 X 35
15	Air Wash Cover	PS10309	1	38	Logo Badge	CAL0101KE(Logo)	
16	Black	PS10304	1	39	Pull Rod Knob	CA010402	8 Ø25X 30
17	Front	PS10303	1	40	Glass slips	CA1112	/
18	Bottom	PS10301	1	41	T Handle	CA0109	/
19	Leg	PS10223	4	42	Door Glass	CA10PS103	328X252X5
20	Back Air Damper	CA0903	1	43	Ashpan	CA1201	330X260X35
21	Flue Cover Blanking Plate	C150	1	44	Fiberglass rope	CA0801	Ø6
22	Blanking Plate Locking Bar	C150Y	1	45	Fiberglass rope	CA0802	Ø8
23	Ashpan Handle	CA0105A	1				